

AM43 Blind Drive Motor Manual Instruction



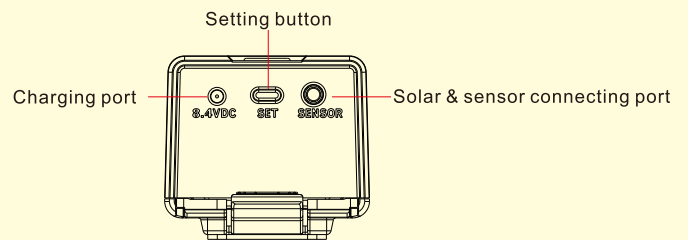
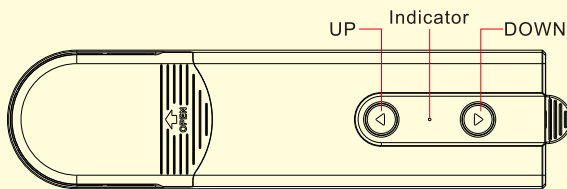
1.Features

- 1). Motor can set upper & bottom limit positions and limits can be saved even when motor power off
- 2). Two running modes: tilt & lift mode. Default mode is tilt
- 3). Smart phone APP control
- 4). Zigbee Bi-direction technology, instant shades status can be showed on APP
- 5). Motor speed is adjustable on the APP
- 6). Large battery capacity supports long time working
- 7). Powered by charger or solar panel, the solar panel with built in light sensor for auto-control

2.Motor specifications

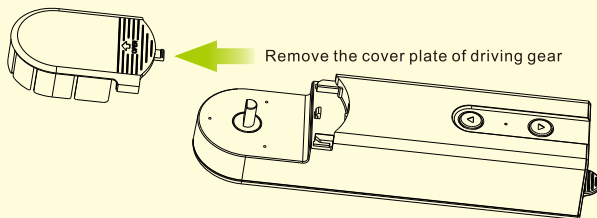
Model	Input Power	Solar panel specs	Lock-rotor current	Speed Range	Torque	Rated Current	Battery Capacity
AM43-0.45/40-ES-EZ(TY)	DC charger 8.4VDC	12V/0.3W	1.8A	20-50rpm	0.45Nm	1A	7.4VDC/1000mAh

3.Motor Illustration

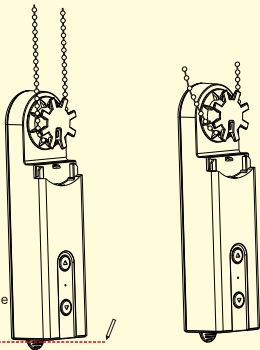


4.Installation

- 1.Do not exposure it under strong direct sunshine. Keep the blind engine far away from high temperature or wet place for using or storing.



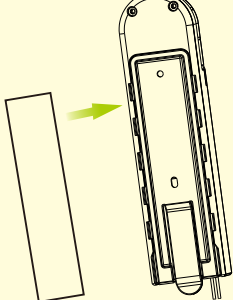
- 3.Tighten the cords or chains to driving gear.



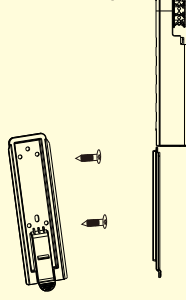
Please leave 3-5mm space between the bottom position and support bracket during installation.

- 4.Blind engine fixing plate installation options

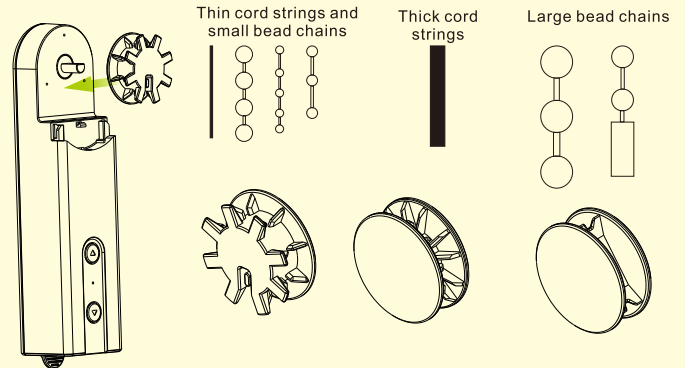
1.3M adhesive



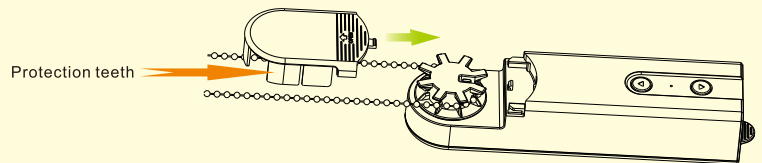
2.Screw fixing



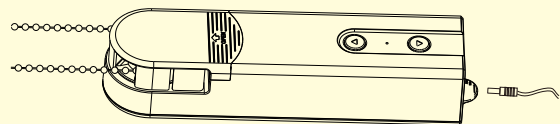
- 2.Choose compatible driving gear



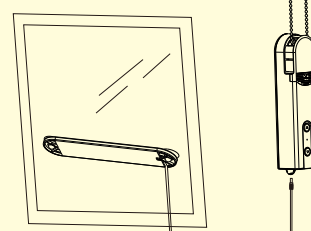
- 5.Remove the teeth where from the cord or chains come out on cover plate; then lock the cover up



- 6.Connect the solar panel or sensor to blind engine; Please pay attention the wires in case wires wrapping.



Correct installation



5. Setting instruction

1. Power On/Off

Power on

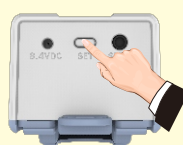


Press the setting button for 1'

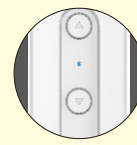


Blue indicator flashes for 2'

Power off



Press the setting button for 7'



Blue indicator flashes slowly for 3 times (1' on, 1' off)

2. Button control

Dot move mode
(apply to venetian
blinds, dual shades,
triple shades)

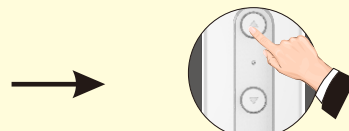


Hit the button <1.5', motor stops where you release the button; Keep hitting the button > 1.5', motor moves continuously

Continuous driving mode



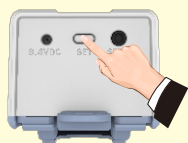
Hit the button for 1', motor moves continuously



Hit the button again, motor stops

3. Tilt/lift functions convert

*Remark: default mode is tilt mode

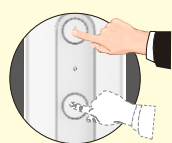


Hit the setting button 5 times (each hit no more than 1')



Blue indicator flashes 3 times, convert is done.

4. Change direction

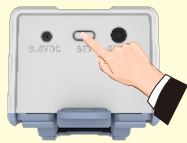


Hit the up and down button at the same time for 3'

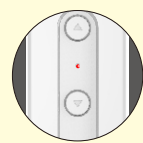


Blue indicator flashes 3 times, direction changing is done

5. Upper limit setting (Motor will quit setting mode automatically after 30' if the motor receives any order)



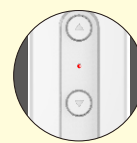
Hit the setting button for 3", motor enter into setting mode



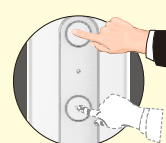
Indicator turns red



Press UP button enters into limit setting mode



Red indicator flashes quickly



Move the curtain to desired position



Hit the setting button for 3'

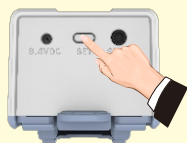


Blue indicator flashes 3 times

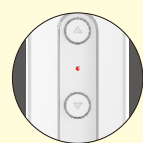


Now motor saves the upper limit

6. Bottom limit setting (Motor will automatically exit setting mode after 30" if motor without receiving any order)



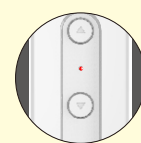
Hit the setting button for 3", motor enter setting mode



Indicator turns red



Press Down button gets into limit setting mode



Indicator flashes red quickly



Move the curtain to desired position



Hit the setting button for 3'

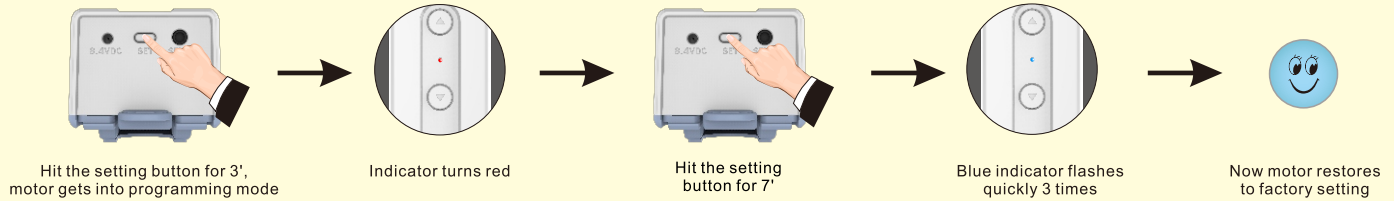


Blue indicator flashes 3 times



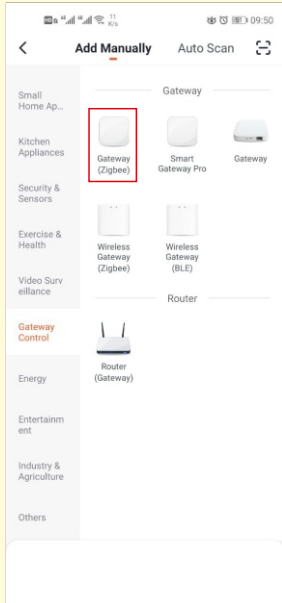
Now motor saves the bottom limit

7. Restore factory setting (Motor will automatically exit programming mode after 30" if motor without receiving any order Motor restore to factory setting will delete all the setting you done before)

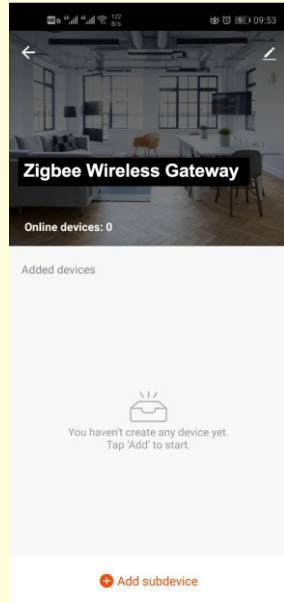


6.APP control

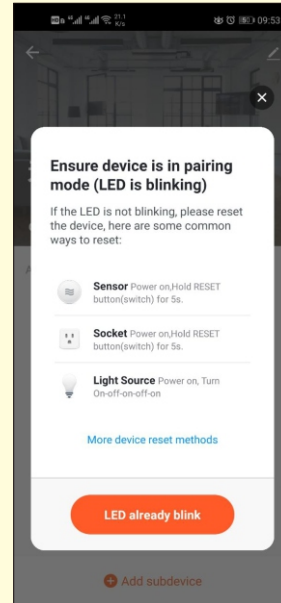
1.Download APP (search TUYA in APP store/ Google play, register an account with mobile phone number or email address and then log in to APP)



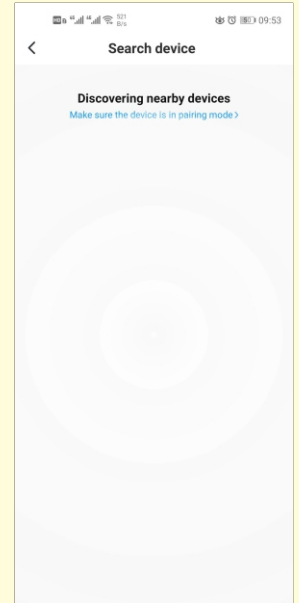
1.Click "+" to add gateway



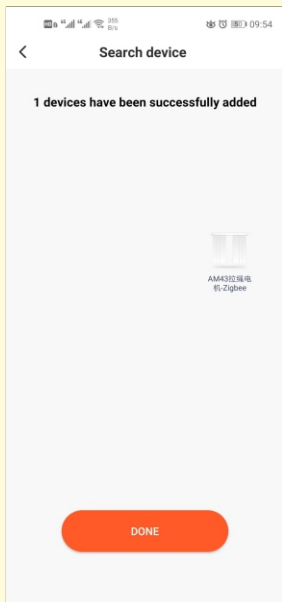
2.After adding gateway , click"add sub devices"



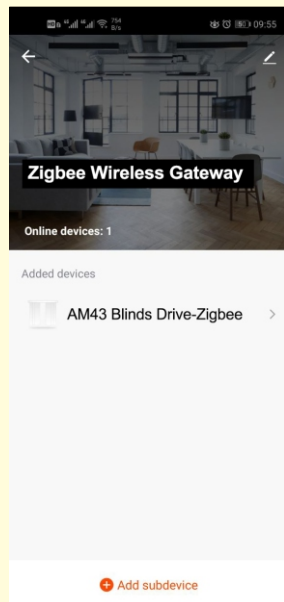
3. devices get into pairing mode, then click 'LED already blink'



4.Search nearby devices



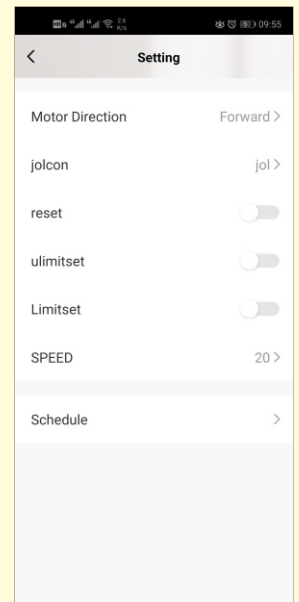
5.After searched devices, click "DONE"



6.Choose the device just added



7.this page can operate the motor going UP, STOP, DOWN; click 'More' to get into multiple functions setting page



8.Multiple functions setting

7.Troubles shooting

No.	Troubles	Troubles Reason	Elimination Method
1	Motor doesn't work or run slowly	A.overloaded B.improperly installation make motor stuck	A.choose proper motor B.check motor installation
2	Motor suddenly stop working	A.power off B.motor enter overloaded protection	A. charge the motor B. check whether motor is overloaded or stuck
3	Motor doesn't work when you charge motor	Put the charger on sensor connection port	Connect to charger port

Tips: please check carefully and don't make mistake on the 8.4VDC charger port and sensor connection port